



Original article

Validation of a simple HPLC method to quantify methotrexate concentrations in human plasma

Thuan Thi Minh Nguyen^{a*}, Minh Hue Nguyen^a

^aBiochemistry Department, Faculty of Pharmacy, University of Medicine and Pharmacy at Ho Chi Minh City, Viet Nam.

Received May 24, 2021; Revised October 23, 2021; Accepted November 2, 2021

Abstract: Methotrexate (MTX) is a chemotherapy and immunosuppressive agent widely used to treat cancer, autoimmune diseases in children and adult patients, and ectopic pregnancy. However, MTX is highly toxic to the liver, kidney, and nervous system. This study aimed to quantify the concentration of MTX in human plasma using high-performance liquid chromatography (HPLC). MTX and its internal standard (para aminoacetophenone-PAPA) in plasma samples were extracted simultaneously with methanol. Sample purity was performed using the 1 cc OASIS HLB cartridges. Sample injection volume of 10 μ L was analyzed on a Lichrocart Supersil 125-4 column C18 maintained at 40 °C on a Waters 2695 XE equipped with a PDA detector set at 303 nm. The mobile phase contained phosphate buffer (pH 6.0) and methanol at a ratio of 80:20 (v/v) and was maintained at a flow rate of 1 ml/min. The results showed that the total time of chromatographic analysis was 15 min. MTX and PAAP were found in the chromatograms at retention times of 2.3 and 5.2 min, respectively. The linear range of the MTX from 0.5 to 25 μ g/mL. Intra-day and inter-day imprecision for MTX ranged from 3.42 to 8.128%. LLOQ of MTX was 0.5 μ g/mL and the extraction effects were above 77%. In conclusion, we developed and validated a simple HPLC method to determine the MTX concentrations in human plasma.

Keywords: methotrexate; high performance liquid chromatography; plasma.

1. INTRODUCTION

Methotrexate (MTX) is a chemotherapy and immunosuppressive agent widely used to treat cancer, autoimmune diseases in children and adult patients, and ectopic pregnancy [1-3]. However, MTX is highly toxic to the liver, kidney, and nervous system [4,5]. People receiving long-term MTX treatment should be monitored for side effects, especially for those with insufficient kidney function [6-9]. Pharmacokinetic monitoring of the MTX in patients under MTX therapy may optimize the treatment efficacy and reduce the adverse effects of MTX [10]. Determination of MTX levels in plasma contributes to adjust MTX dosing.

MTX concentrations are usually quantified in the laboratory using an automated immunoassay analyzer.

However, metabolites of MTX and other endogenous compounds can induce cross-reactivity in immunoassays. Previous studies showed that all MTX concentrations were affected by 7-hydroxy methotrexate (a metabolite of MTX in plasma), as quantified by immunoassays such as FPIA (fluorescence polarization immunoassays) and EMIT (enzyme-multiplied immunoassay technique) whereas HPLC method was not affected [11,12]. Various methods for the quantification of MTX and its metabolites in plasma by HPLC, liquid chromatography-mass spectrometry (LC-MS), capillary electrophoresis, etc. have been developed and validated [13]. HPLC is considered the standard method for the accurate quantification of MTX concentrations in plasma collected from cancer patients treated with high doses of MTX [14].

*Address correspondence to Thuan Thi Minh Nguyen at the Biochemistry Department, Faculty of Pharmacy, University of Medicine and Pharmacy at Ho Chi Minh City, Viet Nam; E-mail: ntmthuan@ump.edu.vn
DOI: 10.32895/UMP.MPR.6.1.5

Although MTX is widely indicated in cancer treatment as well as ectopic pregnancy in Vietnam, MTX levels have not been monitored during treatment. Based on the actual need to monitor the therapeutic toxicity of MTX in order to optimize the therapeutic effect and control the toxicity of the drug, the purpose of this study is to quantify the concentration of MTX in human plasma using HPLC connected to PDA detector.

2. MATERIALS AND METHOD

2.1. Materials and the instruments

The SPE cartridges (OASIS® HLB cartridge 1 mL were obtained from Waters (USA). Superspher® 100 RP-18 (C18 reversed-phase HPLC column) was purchased from Merck (Germany). Liquid chromatography was performed on HPLC system 2695 XE (Waters) equipped with a PDA detector.

2.2. Chemicals, reagents and plasma samples

Para aminoacetophenone (PAAP) and MTX were from Sigma Aldrich. HPLC-grade methanol (MeOH) was purchased from Merck and JT Baker, respectively. Potassium dihydrogen phosphate, ammonium hydroxide solution 25% and formic acid were obtained from Merck. Human plasma samples for analytical development were obtained from Blood Bank of Cho Ray Hospital at Ho Chi Minh City, Vietnam. The Ethics Committee of University of Medicine and Pharmacy at Ho Chi Minh City has already approved this study.

2.3. Preparation of reagents, stock solutions and samples

Reagents: Solutions of 4% phosphoric acid and 5% methanol were prepared by diluting the concentrated solutions with double distilled water. Phosphate buffer (pH 6.0) was prepared by diluting 0.68 g KH_2PO_4 in double distilled water to obtain 500 ml of 0.01 M KH_2PO_4 . pH (6.0) was adjusted with 0.2M KOH.

Stock solutions: The solutions of 1 mg/mL PAAP (as internal standard) and 100 $\mu\text{g}/\text{mL}$ MTX prepared separately in 0.01 M NaOH were considered as stock solutions, and then stored at -20°C . Working solutions of 10 $\mu\text{g}/\text{mL}$ PAAP and MTX were diluted from the stock solutions with 0.01 M NaOH.

Calibrations and quality control samples: MTX calibrations were prepared by adding 100 μL of 10 $\mu\text{g}/\text{mL}$ PAAP as into 400 μL of plasma fortified appropriate amounts of MTX to achieve calibrators concentrations of 0.5, 1, 5, 15, 25 $\mu\text{g}/\text{mL}$. MTX quality control (QC) samples consisted of 100 μL of PAAP 10 $\mu\text{g}/\text{mL}$ and 400 μL of plasma fortified appropriate amounts of MTX to achieve QC concentrations of 0.5, 10, 20 $\mu\text{g}/\text{mL}$.

These samples were then processed similarly to the real samples. For samples obtained from patients under MTX therapy, only 100 μL of 10 $\mu\text{g}/\text{mL}$ PAAP were added to 400 μL of plasma.

2.4. MTX extraction from plasma samples

100 μL of 10 $\mu\text{g}/\text{mL}$ PAAP, 400 μL of 4% H_3PO_4 and 500 μL of plasma were added to a 2 ml eppendorf tube. Plasma samples were mixed for 30 min and then centrifuged at 10,000 g for 10 minutes at room temperature to remove protein

precipitates. 800 μL of supernatants were transferred into OASIS HLB cartridge 1ml previously activated with 1 ml of pure MeOH and 1 ml of distilled water. Next, the impurities were removed from cartridges using subsequently either 1 ml of distilled water or 5% MeOH and 1 ml of 2% HCOOH. Then MTX and internal standard (IS) simultaneous extraction was performed by adding either 1mL of pure MeOH or 5% ammonium hydroxide in MeOH. The solution eluted from the cartridge was collected into a 1.5 mL eppendorf and evaporated to dryness at 50°C . The dry fraction was reconstituted with 200 μL of 0.01M NaOH. After centrifuging at 10,000 g for 5 min at room temperature, 10 μL of the supernatants were collected for MTX measurement in HPLC system.

2.5. HPLC conditions

Chromatographic separation of the extracted samples was obtained using C18 reversed-phase column Superspher® maintained at 40°C . The tray temperature in the autosampler was kept at RT. The isocratic mobile phase contained 80% of 0.01M KH_2PO_4 (pH 6.0) and 20% of pure MeOH (v/v). The flow rate was set at 1 mL/min. The time of isocratic separation was 10 min after injecting 10 μL of sample onto the column and then a gradient mode was used for 5 min to clean the column before the next run.

2.6. Validation of plasma MTX assay

The validation criteria were according to the U.S. Food and Drug Administration (FDA) guidelines 200 [15].

Selectivity: MTX and IS were spiked in blank plasma samples to differentiate the analytes from other components in the matrix. The responses of interfering components should not exceed 15% of QC levels of MTX and 5% for IS.

Linearity: The linearity of the method was assessed on the 5 calibrators in a replicate of 3 in 3 runs. The coefficient R^2 of the linear curve should be > 0.99 . Calibration curves were based on the ratios of MTX/PAAP peak area versus MTX concentrations. The regression equation was used to calculate plasma MTX levels. The coefficient of variation (CV) should not exceed $\pm 20\%$ at lower limit of quantification (LLOQ) and within $\pm 15\%$ at the other concentrations.

Accuracy: The accuracy was assessed with QC samples at 3 levels of 0.5, 10, 20 $\mu\text{g}/\text{mL}$ in replicate of five. Intra and inter-assay accuracies were calculated from the differences between the nominal and the observed concentrations. The within-run CV% value of accuracy should be $\leq 15\%$ at QC levels and $\leq 20\%$ at LLOQ.

Precision: The precision was assessed with QC samples at 3 levels of 0.5, 10, 20 $\mu\text{g}/\text{mL}$ in replicate of five. The within-run CV% value of precision should be $\leq 15\%$ at QC levels and $\leq 20\%$ at the LLOQ.

Recovery: Recovery of MTX was determined by comparing the results from extracts at 3 QC levels (0.5, 10, 20 $\mu\text{g}/\text{mL}$) with MTX standard concentrations in replicate of five.

LLOQ and LOD (limit of detection): LLOQ is a concentration with CV% of precision and accuracy $\leq 20\%$, and ratio of signal/noise (S/N) $> 10:1$. LOD is a concentration with S/N $> 3:1$.

Stability: The stability of MTX was investigated in triplicate in QC samples at 0.5, 10, 20 $\mu\text{g/mL}$, after 12h at RT. The stability of MTX and IS in the autosampler was evaluated after 24h at 4 $^{\circ}\text{C}$. MTX and IS were stable in plasma if the change in concentration did not exceed $\pm 15\%$ from the original concentration.

2.7. Data analysis

Statistics were performed using Microsoft Excel 2010. The results were expressed as mean \pm SD (standard deviation). The significance of the slope and intercept of the linear regression equation T-test was evaluated by T-test [16]. The overall significance of the regression analysis was evaluated by F-test [17]. The difference was significant with P value < 0.05 .

3. RESULTS

3.1. MTX extraction from plasma

After transferring the plasma samples onto SPE cartridge, 1 ml of 5% methanol and 1 ml of 2% HCOOH were subsequently added to the SPE. Then SPE was eluted once with 1 mL of pure MeOH. MTX signals were detected with a high intensity by HPLC system. This suggested that the washing and eluting steps were sufficient to remove impurities from MTX in plasma. Based on HPLC conditions, diode array HPLC detector (PDA) showed the maximum absorbance of MTX at 303 nm.

3.2. Validation results

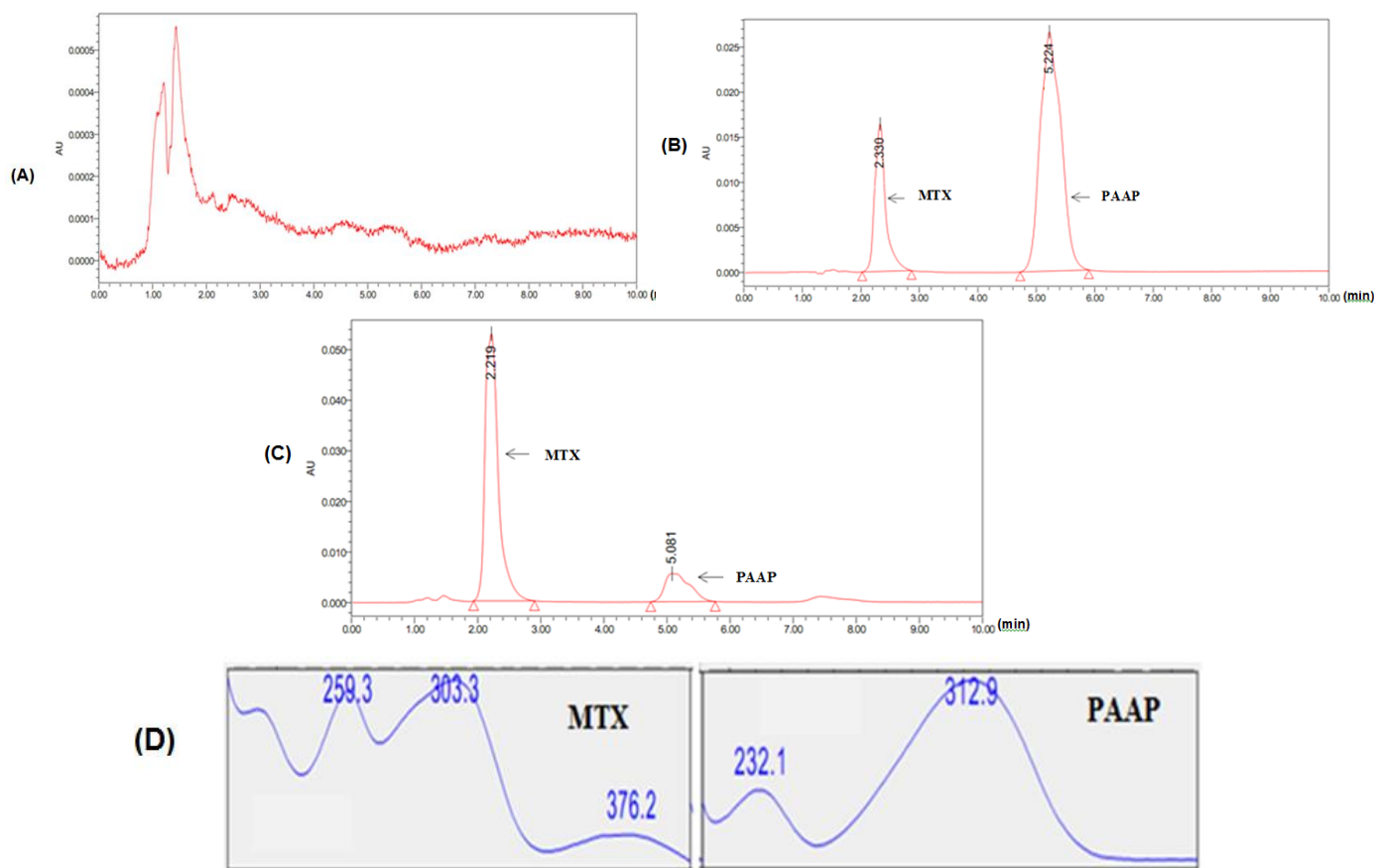


Figure 1. HPLC chromatogram of extracts from (A) blank plasma, (B) standard mixture of MTX and PAAP at 5 $\mu\text{g/mL}$, (C) plasma QC sample of MTX and PAAP at 5 $\mu\text{g/mL}$; Typical spectra of MTX and PAAP (D)

Selectivity: MTX and IS were observed at 2.3 min and 5.2 min, respectively, in chromatogram. No interfering peak was detected at retention times of interests. Retention times and spectra of MTX and IS in standard mixture and QC samples were the same (see Figure 1).

Linearity: The linear concentration range of MTX was from 0.5 to 25 $\mu\text{g/mL}$. The typical linear regression equation between MTX concentration ($\mu\text{g/mL}$) and ratio of MTX/PAAP peak area was: $y = 0.3545x - 0.0546$ with the mean value of coefficient of determination (R^2) for MTX calibration curve > 0.997 (see Figure 2).

Accuracy and Precision: At the 3 QC concentrations mentioned above, CV% of the between-day and within-day precision ranged from 2.93 – 8.1% and from 4.5 – 7.44%, respectively. The between-day and within-day accuracies were in the range from 100.04 – 106.65% and 101.05 – 105.02%, respectively. All inter- and intra-day assays are summarized in Table 1.

Recovery: Average recoveries at three QC concentrations of MTX above 77% (range: 70.08–81.98%) displayed a good reproducibility (see Table 1).

Limit tests: LLOQ of MTX was found to be 0.5 µg/mL with accuracies in range from 94.79 – 103.68% and imprecision at 3.63%. LOD concentration was 0.075 µg/mL, respectively (see Table 2).

Stability: MTX levels in the initial plasma samples were insignificantly different from plasma samples after 12h at RT, and extracts maintained the autosampler for 24h.

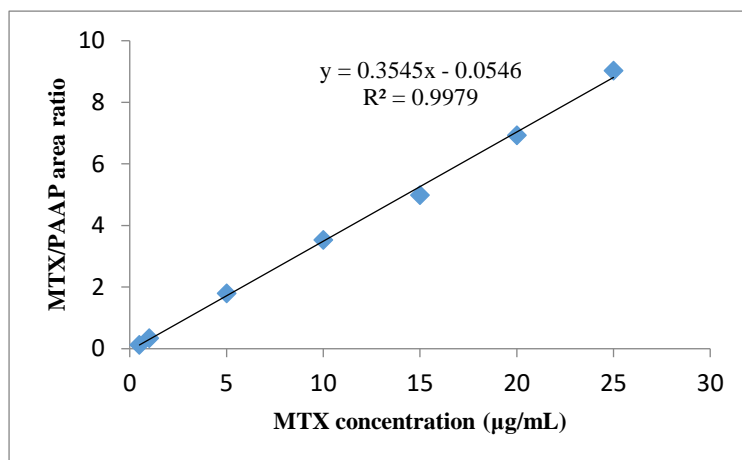


Figure 2. Correlation between MTX plasma concentrations and MTX/PAAP area ratio

Table 1. Within-day and between-day accuracy and imprecision for MTX at three levels of QC samples

Concentrations of QC samples (µg/mL)	Found mean concentrations ± SD (µg/mL)	Between-day (n=4) Accuracy/imprecision (%)	Within-day (n=5) Accuracy/imprecision (%)
0.5	0,494 ± 0,016	98.84/3.42	92.4/7.50
10	9,857 ± 0,660	98.57/6.69	99.2/6.00
20	19,615 ± 1,593	89.07/8.12	98.3/6.05

Table 2. Recovery of MTX (n=5)

Concentrations of QC samples (µg/mL)	Sample number	Found concentrations (µg/mL)	Recovery (%)	Mean ± SD (%)
0.5	1	0.34	68.76	70.08 ± 1.41
	2	0.36	72.03	
	3	0.35	69.44	
	4	0.35	69.09	
	5	0.36	71.07	
10	1	8.51	85.07	81.99 ± 3.30
	2	8.28	82.84	
	3	7.81	78.05	
	4	8.50	84.96	
	5	7.90	79.01	
20	1	15.86	79.28	80.19 ± 2.51
	2	16.70	83.51	
	3	15.56	77.79	
	4	15.65	78.24	
	5	16.43	82.14	

Table 3. Accuracy and imprecision of MTX at LLOQ

Samples	Before-processing LLOQ	Post-processing LLOQ	Accuracy (%)	Imprecision (CV %)
	($\mu\text{g/mL}$)	($\mu\text{g/mL}$)		
1	0.5	0.5156	103.11	3.63
2	0.5	0.4740	94.79	
3	0.5	0.5184	103.68	
4	0.5	0.4883	97.66	
5	0.5	0.4859	97.18	
6	0.5	0.5075	101.49	

4. DISCUSSION

MTX is used in various dosages in the treatment of different diseases. Therefore, the risks of MTX toxicity depend on dose and duration of administration. It was recommended that plasma concentrations of MTX should be controlled to $\leq 1.0 \mu\text{M}$ (equivalent to $\mu\text{g/mL}$) after initiation of a high-dose MTX for 42 hours. Plasma concentrations of $5 \mu\text{g/mL}$ MTX at 42 hours after initiation of a high-dose MTX infusion could lead to MTX toxicity [18,19]. The previous studies demonstrated that MTX and its insoluble metabolites could induce acute nephrotoxicity [6,7].

Because a relationship between the outcome of MTX treatment and its systemic exposure has been demonstrated, monitoring of MTX concentrations in plasma may prevent early occurrence of adverse reactions and to monitor the optimization of patient clinical response [20]. To date, many quantitative methods have been developed to measure MTX plasma concentrations such as HPLC) equipped with either ultraviolet (UV) or PDA (Photodiode array) or mass-spectrometric (MS) detectors, or immunoassays such as ELISA (enzyme-linked immunosorbent assay), FPIA and EMIT [21-24]. The method most commonly used for MTX measurement is FPIA. However, the plasma MTX concentrations as quantified by immunoassays were affected by 7-hydroxy methotrexate (a metabolite of MTX in plasma) whereas HPLC method was not affected [11,12]. The choice of the method may depend on different factors such as the equipment available in the laboratory, the experience of the laboratory technicians and the number of assays to run. In previous studies, many HPLC methods using C18 reversed-phase columns were developed to determine MTX concentrations in plasma [2,19,21,23-25].

Although MTX is widely indicated in cancer treatment as well as ectopic pregnancy in Vietnam, MTX levels have not been monitored in treatment. Based on the actual need to monitor the therapeutic toxicity of MTX in order to optimize the therapeutic effect and control the toxicity of the drug, we developed and validated a reliable HPLC method to quantify MTX concentrations in plasma. LLOQ of $5 \mu\text{g/mL}$ was similar to that of previous chromatographic methods [19,26] and highly reliable as it was determined based on the signal/noise ratio and met the validation requirements. We have developed an HPLC method with low sample injection volume and short analysis time (retention times of 2.3 min for MTX and 5.2 min for PAAP) compared to previous methods [19,29]. The limitation of this study is that the HPLC method developed to quantify MTX concentrations has not yet been used for bioequivalence studies and clinical trials. Therefore, this HPLC method can be used for further bioequivalence

studies of MTX or to measure the MTX concentration in plasma from patients under MTX therapy.

Conclusion

We described a simple and reliable HPLC method suitable for quantifying plasma MTX concentrations with LLOQ $0.5 \mu\text{g/mL}$. This method met the required validation criteria including: selectivity, linearity, accuracy, precision, recovery and stability, thus, may be used for further bioequivalence studies of MTX or to measure the MTX concentration in plasma from patients under MTX therapy.

FUNDING

The authors received no financial support for the research, authorship, and/or publication of this article.

CONFLICT OF INTEREST

The authors declare that there is no conflict of interest.

ACKNOWLEDGEMENTS


We wish to express our thanks to our colleagues in University of Medicine and Pharmacy at Ho Chi Minh City for their supports in completing this study.

SUPPLEMENTARY MATERIAL

Supportive/Supplementary material intended for publication must be numbered and referred to in the manuscript but should not be a part of the submitted paper. List all Supportive/Supplementary Material and include a brief caption line for each file describing its contents.

ORCID ID

Thuan Thi Minh Nguyen  <https://orcid.org/0000-0001-8137-6955>

Minh Hue Nguyen  <https://orcid.org/0000-0001-7967-4945>

REFERENCES

- Asselin BL, Devidas M, Wang C, Pullen J, Borowitz MJ, Hutchison R, et al. Effectiveness of high-dose methotrexate in T-cell lymphoblastic leukemia and advanced-stage lymphoblastic lymphoma: a randomized study by the Children's Oncology Group (POG 9404). *Blood*. 2011 Jul 28;118(4):874-83. doi: 10.1182/blood-2010-06-292615. Epub 2011 Apr 7. PMID: 21474675
- Begas E., Papandreou C, Tsakalof A, Daliani D, Papatsibas G, Asprodingi E. Simple and reliable HPLC method for the monitoring of methotrexate in osteosarcoma patients. *J Chromatogr Sci*. 2014 Aug;52(7):590-5. doi: 10.1093/chromsci/bmt081. Epub 2013 Jun 25. PMID: 23800772
- Pui C-H., Campana D, Pei D, Bowman W.P, Sandlund JT, Kaste SC, et al. Treating childhood acute lymphoblastic leukemia without cranial irradiation. *N Engl J Med*. 2009 Jun 25;360(26):2730-41. doi: 10.1056/NEJMoa0900386. PMID: 19553647

4. Frei E., Blum RH, Pitman SW, Kirkwood JM, Henderson IC, Skarin AT, et al. High dose methotrexate with leucovorin rescue: rationale and spectrum of antitumor activity. *Am J Med.* 1980 Mar;68(3):370-6. doi: 10.1016/0002-9343(80)90105-9. PMID: 6965819
5. Howard SC, McCormick J, Pui C-H, Buddington RK and Harveyd RD. Preventing and Managing Toxicities of High-Dose Methotrexate. *Oncologist.* 2016 Dec;21(12):1471-1482. doi: 10.1634/theoncologist.2015-0164. Epub 2016 Aug 5. PMID: 27496039
6. May J, Carson KR, Butler S, Liu W, Bartlett NL, and Wagner-Johnston ND. High Incidence of Methotrexate Associated Renal Toxicity in Patients with Lymphoma: A Retrospective Analysis. *Leuk Lymphoma.* 2014 Jun;55(6):1345-9. doi: 10.3109/10428194.2013.840780. Epub 2013 Nov 1. PMID: 24004183. PMCID: PMC4100682
7. Al-Turkmani MR, Law T, Narla A, Kellogg MD. Difficulty Measuring Methotrexate in a Patient with High-Dose Methotrexate-Induced Nephrotoxicity. *Clin Chem.* 2010 Dec;56(12):1792-4. doi: 10.1373/clinchem.2010.144824. PMID: 21119035
8. Perazella MA, Moeckle GW. Nephrotoxicity from chemotherapeutic agents: clinical manifestations, pathobiology, and prevention/therapy. *Semin Nephrol.* 2010 Nov;30(6):570-81. doi: 10.1016/j.semnephrol.2010.09.005. PMID: 21146122
9. Stark AN, Jackson G, Carey PJ, Arfeen S and Proctor SJ. Severe renal toxicity due to intermediate-dose methotrexate. *Cancer Chemother Pharmacol.* 1989;24(4):243-5. doi: 10.1007/BF00257626. PMID: 2546688
10. Widemann BC, Adamson PC. Understanding and managing methotrexate nephrotoxicity. *Oncologist.* 2006 Jun;11(6):694-703. doi: 10.1634/theoncologist.11-6-694. PMID: 16794248
11. Albertioni F, Rask C, Eksborg S, Poulsen JH, Pettersson B, Beck O, et al. Evaluation of clinical assays for measuring high-dose methotrexate in plasma. *Clin Chem.* 1996 Jan;42(1):39-44. PMID: 8565230
12. Fotoohi K, Skärby T, Söderhäll S, Peterson C, Albertioni F. Interference of 7-hydroxymethotrexate with the determination of methotrexate in plasma samples from children with acute lymphoblastic leukemia employing routine clinical assays. *J Chromatogr B Analyt Technol Biomed Life Sci.* 2005 Mar 25;817(2):139-44. doi: 10.1016/j.jchromb.2004.11.037. PMID: 15686977
13. Karami F, Ranjbar S, Ghasemi Y, Negahdaripour M. Analytical methodologies for determination of methotrexate and its metabolites in pharmaceutical, biological and environmental samples. *J Pharm Anal.* 2019 Dec;9(6):373-391. doi: 10.1016/j.jpha.2019.06.001. Epub 2019 Jun 20. PMID: 31890337. PMCID: PMC6931080
14. Sparreboom A, Loos WJ, Nooter K, Stoter G, Verweij J. Liquid chromatographic analysis and preliminary pharmacokinetics of methotrexate in cancer patients co-treated with docetaxel. *J Chromatogr B Biomed Sci Appl.* 1999 Nov 26;735(1):111-9. doi: 10.1016/S0378-4347(99)00387-4. PMID: 10630896
15. F.D.A., U.S. Department of Health and Human Services. Guidance for industry, Bioanalytical method validation. 2001
16. Cociglio M, Hillaire-Buys D, Peyrière H, Alric R. Performance Analysis of a Rapid HPLC Determination with the Solvent Demixing Extraction of HIV Antiproteases and Efavirenz in Plasma. *J Chromatogr Sci.* 2003 Feb;41(2):80-6. PMID: 12639255 DOI: 10.1093/chromsci/41.2.80.
17. Sureiman O, Mangera CM. F-test of overall significance in regression analysis simplified. *J Pract Cardiovasc Sci* 2020;6:116-22. DOI:10.4103/jpcs.jpcs_18_20.
18. Lawrenz-Wolf B, Wolfrom C, Frickel C, Fengler R, Wehinger H, Henze G. Severe renal impairment of methotrexate elimination after high dose therapy. *Klin Padiatr.* 1994 Jul-Aug;206(4):319-26. doi: 10.1055/s-2008-1046623. PMID: 7967432.
19. Moghbel A, Zand-Moghaddamb A, Rezaee S, Pedramet M. High-performance liquid chromatography determination of methotrexate in plasma. *IJPR* 2003, 2: 149-152. doi: 10.22037/IJPR.2010.43
20. Silva MF, Ribeiro C, Gonçalves VMF, Tiritan ME, Lima A. Liquid chromatographic methods for the therapeutic drug monitoring of methotrexate as clinical decision support for personalized medicine: A brief review. *Biomed Chromatogr.* 2018 May;32(5):e4159. doi: 10.1002/bmc.4159. Epub 2018 Jan 12. PMID: 29226354 DOI: 10.1002/bmc.4159
21. Aboleneen H, Simpson J, Backes D. Determination of methotrexate in serum by high-performance liquid chromatography. *J Chromatogr B Biomed Appl.* 1996 Jun 7;681(2):317-22. doi: 10.1016/0378-4347(95)00580-3. PMID: 8811442
22. Ren X, Wang Z, Yun Y, Meng G, Zhang X, Ding H, et al. Simultaneous Quantification of Methotrexate and Its Metabolite 7-Hydroxy-Methotrexate in Human Plasma for Therapeutic Drug Monitoring. *Int J Anal Chem.* 2019 Feb 3;2019:1536532. doi: 10.1155/2019/1536532. eCollection 2019. PMID: 30853983. PMCID: PMC6378003
23. Nagulu M, Kiran VU, Reddy YN, Devarakonda K. Development and validation of rapid and sensitive HPLC method for the determination of methotrexate in human serum. *J Chromatogr B Analyt Technol Biomed Life Sci.* 2015 Oct 1;1002:107-12. doi: 10.1016/j.jchromb.2015.08.017. Epub 2015 Aug 20. PMID: 26319303
24. Yusuf A, Alvi SN, Hammamiet MM. Rapid determination of methotrexate level in human plasma by high performance liquid chromatography. *WJPPS.* 2014; 3(10): 125-135. ISSN 2278 – 4357
25. Cociglio M. et al. Determination of methotrexate and 7-hydroxymethotrexate by liquid chromatography for routine monitoring of plasma levels. *J Chromatogr B Biomed Appl.* 1995 Dec 1;674(1):101-10. doi: 10.1016/0378-4347(95)00301-x. PMID: 8749257
26. Montemurro M, De Zan MM, Robles JC. Optimized high performance liquid chromatography-ultraviolet detection method using core-shell particles for the therapeutic monitoring of methotrexate. *J Pharm Anal.* 2016 Apr;6(2):103-111. doi: 10.1016/j.jpha.2015.12.001. Epub 2015 Dec 17. PMID: 29403969 PMCID: PMC5762447.